

OEM Pump Series

Four-Piston Diaphragm Pumps



Quattroflow OEM Pump Series for improved system integration

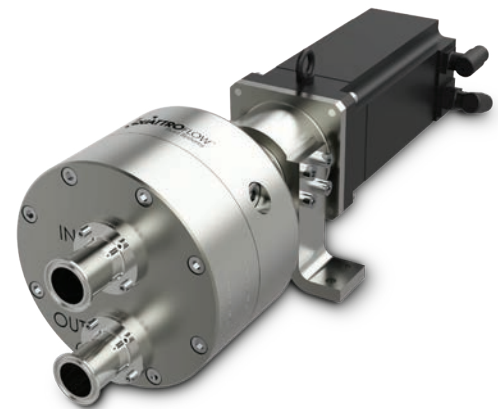
The OEM Pump Series is an integrable (panel-mount) pump series without housing. It comes with small footprint and mounting solutions designed for improved system integration. The attached synchronous servo motor allows a wide flow range and multiple connections to external PLC systems.

OEM Series

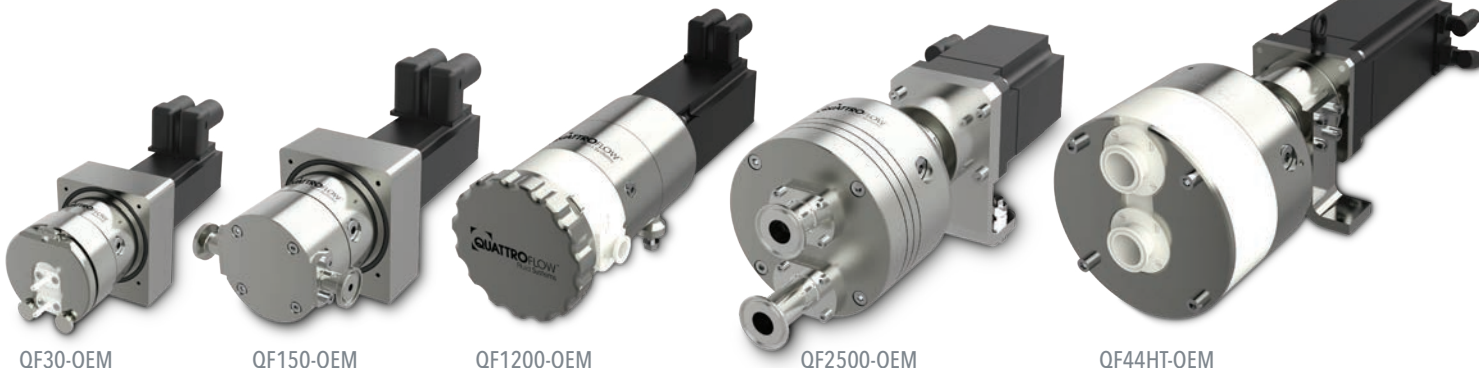
- For Quattroflow multiple- and single-use pumps
- Synchronous servomotor option in 230V / 400V for extended flow ranges
- SEW servo motor as standard
- OEM Pump flange option prepared for multiple AllenBradley motor types
- Available for Quattroflow pump models QF30, QF150, QF1200, QF2500, QF4400 and QF5k

Accessories:

- VFD with optional communication cards (ProfiNET, EtherNET IP, ...) for connection to external PLC system
- Applicable cables in multiple length options
- Gasket solutions to seal pump and system connection point



QF5K-OEM



QF30-OEM

QF150-OEM

QF1200-OEM

QF2500-OEM

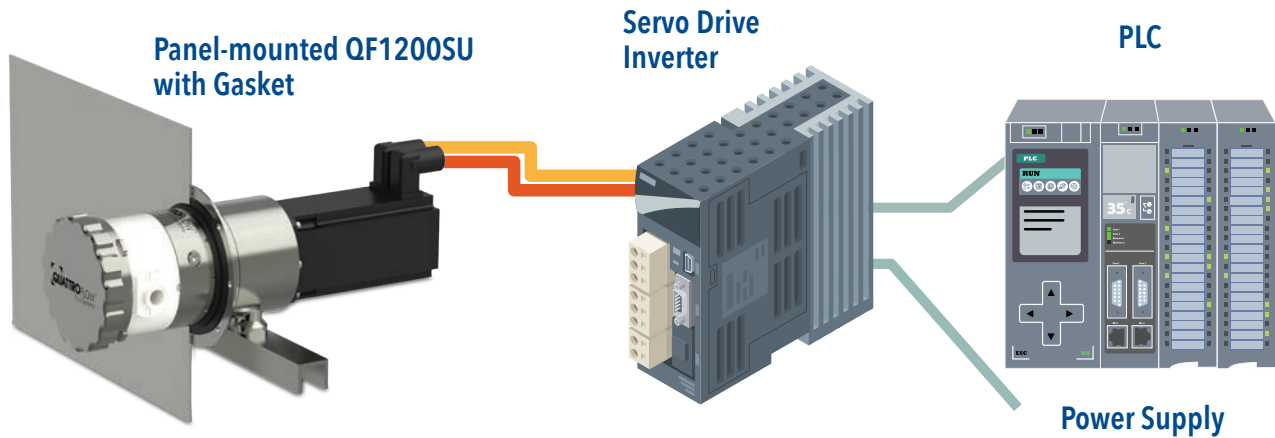
QF44HT-OEM

OEM Pump Series

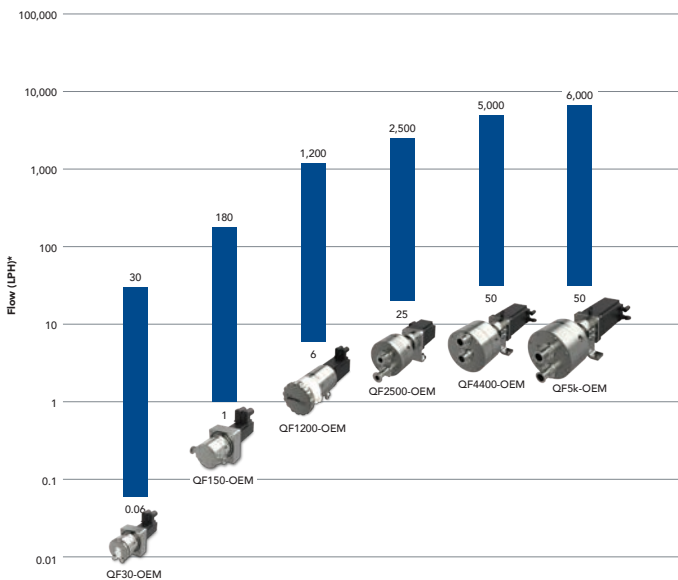
Four-Piston Diaphragm Pumps

| Pump Size | Panel Mount Sealing | Servo Motor | Motor Cable | Drive Inverter | Communication to PLC |
|-----------|---------------------|-----------------------|-----------------|-----------------------|--|
| QF30 | O-Ring | SEW Allen Bradley* | 2m 5m 10m | SEW Allen Bradley* | Analog (4-20mA) ProfiNet EtherNET IP |
| QF150 | | | | | |
| QF1200 | Gasket | | | | |
| QF2500 | | | | | |
| QF4400 | Gasket Tunnel | | | | |
| QF5k | | | | | |

* Adaptions to several Allen Bradley servo types available.



Quattroflow OEM Pump Range



Detailed information can be found in our OEM Guide. If you are interested, please contact your Quattroflow representative or email us at psg-germany@psgdover.com.



QTF-10600-F-01

Copyright 2022 PSG®, a Dover company

Authorized PSG® Partner:

ProcessHQ, Inc.
 410 N. Varney Street
 Burbank, CA 91502
 818 861-7641 (voice)
 818 475-1589 (fax)
info@processHQ.com

Where Innovation Flows



PSG Germany GmbH
 Hochstraße 150-152
 47228 Duisburg, Germany
 Tel: +49 (2065) 89205-0 • Fax: +49 (2065) 89205-40
psgdover.com/quattroflow